



**ONBOARD SYSTEMS
INTERNATIONAL**

Alert Service Letter

Document No. 159-027-00 Rev. 1

Date: September 2, 2009

13915 NW 3rd Court
Vancouver, WA 98685
USA

Subject: Importance of ensuring the load beam is closed and locked before installing the mechanical release cable and setting the free play on TALON™ Keeperless style cargo hooks.

Phone: 360-546-3072

Fax: 360-546-3073

Toll Free: 800-275-0883

www.OnboardSystems.com

Dear Valued Customer:

Onboard Systems has received reports from the field about operators rigging the mechanical release cable on the TALON Keeperless style cargo hooks with the load beam in the open position, which could lead to an inadvertent load release. Our records indicate that your company may have purchased equipment that may be affected under one of the following part or kit numbers:

Affected Part Numbers	Description
528-020-00, -01, -02, -03, -04, -05, -06, -07, -08	TALON MC Keeperless Cargo Hook
528-023-00, -01, -03, -40, -51	TALON LC Keeperless Cargo Hook
528-027-00, -01	TALON LC Keeperless Cargo Hook
528-029-00, -01	TALON LC Keeperless Cargo Hook
200-088-10	Bell 240-412 Cargo Hook Suspension System
200-089-10, -11, -20, -21, -22	Bell 240-412 Cargo Hook Suspension System
200-246-00, -01	Bell 204-412 Replacement Hook Kit
200-258-00, 200-259-00	Bell 407 Cargo Hook Suspension System
200-260-00	Bell 206L/407 Replacement Hook Kit
200-261-00, -01	Eurocopter AS350 Replacement Hook Kit
200-262-00	Robinson R22 Cargo Hook Kit
200-264-00, -01, -02	MD500/600 Cargo Hook Kit
200-267-00	Bell 206A/B Replacement Hook Kit
200-268-00, 200-269-00	Bell 206A/B Cargo Hook Suspension System
200-270-00, 200-271-00	Eurocopter SA315B Replacement Hook Kit
200-280-00, -01	Eurocopter AS350 Swing System
200-281-00	Eurocopter AS350B3 Replacement Hook Kit
200-282-00	Eurocopter AS350 Sling System
200-285-00, 200-286-00, -01	Eurocopter AS350 Retrofit Swing Kit
200-287-00	Eurocopter AS350 Retrofit Sling Kit
200-288-00, 200-289-00	Robinson R44 Cargo Hook Kit
200-290-00, 200-291-00	Eurocopter BO105 Replacement Hook Kit
200-292-01	Eurocopter AS355 Swing System
200-326-00	Robinson R44 Cargo Hook Kit
200-327-00, -01	Robinson R44 Cargo Hook Kit
200-329-00, 200-330-00	Bell 407 Fixed Beam Suspension System



Please review this information and determine if the equipment is still in your possession. If this equipment is no longer in your possession, please forward this notice to the current owner or your customer, as applicable.

It is critical that the load beam of the Onboard Systems TALON Keeperless style cargo hook is closed and fully locked before installation of the mechanical release cable and setting the cable free play. If the free play is set while the load beam is in the open position, when the load beam is closed it may reduce the amount of free play to an unsafe level that will not allow adequate margin of safety during external load operations. The reduced level of free play on the cable may result in inadvertently activating the release mechanism on the hook during operations, which could cause an inadvertent load release.

The following pictures illustrate the proper and improper load beam positions.

FIGURE 1

Picture of proper load beam position. The cargo hook load beam is fully closed and locked, ready to set the mechanical cable free play (circled in yellow).

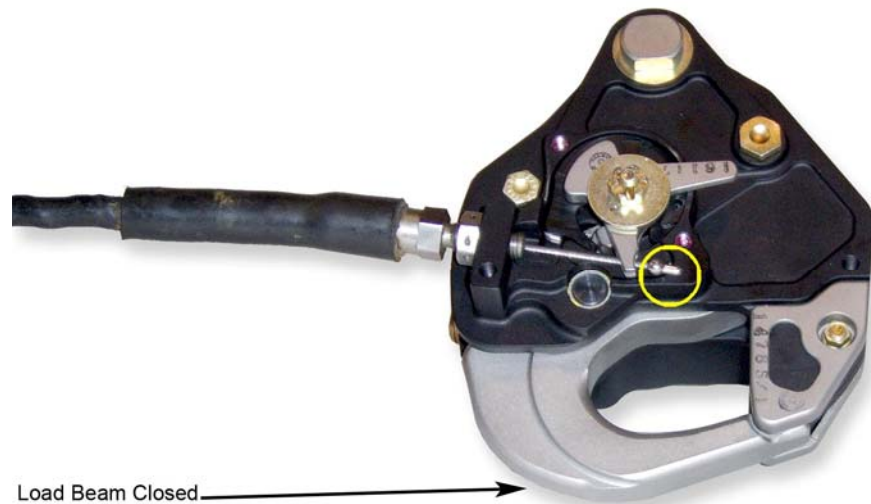
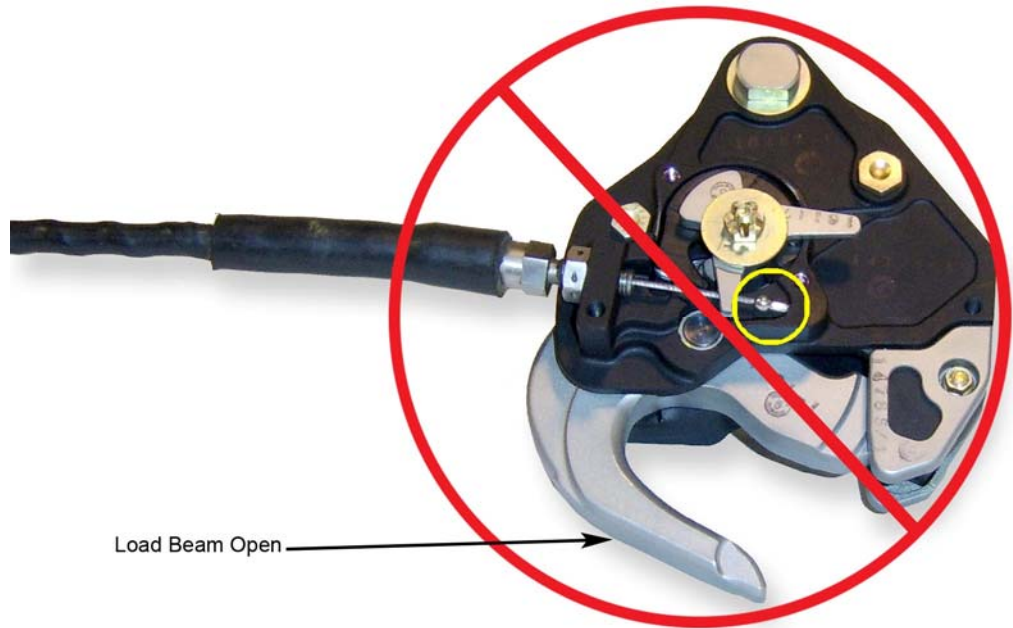


FIGURE 2

Picture of improper load beam position. The cargo hook load beam is open. If the mechanical cable free play is set now, there may not be enough free play in the cable (circled in yellow) when the hook is closed.



The information contained in this service letter is currently being added to the technical documentation that was originally supplied with the equipment, either in the Owner’s Manual, Rotorcraft Flight Manual Supplement or Instructions for Continued Airworthiness, and will be available shortly. Revisions for these manuals will be available for download from our company website at the following link:

http://www.onboardsystems.com/Support/Manuals_and_Documents.php

Onboard Systems is dedicated to supporting helicopter external load operators. We welcome any feedback and comments you may have. If you have any questions or require additional information, please feel free to contact us.

Best regards,

Karsten Lemmon
Vice President, Sales and Marketing
Phone: 360-546-3072, Ext. 215
E-mail: Karsten@OnboardSystems.com