

ALERT SERVICE LETTER

Subject: Electric Swivel Operation

Parts Affected:

Electric Swivel P/N 232-457-00 with Serial Number 119 and previous. The swivel may have been purchased under one of the following kit numbers:

AFFECTED KITS	DESCRIPTION	AFFECTED PART NUMBERS	AFFECTED SERIAL NUMBERS
200-372-00	3K Electric Swivel Kit	232-457-00	119 and previous
200-373-00	6K Electric Swivel Kit	232-457-00	119 and previous

NOTICE

This Alert Service Letter does not address a safety issue—performance only.

Ownership:

Please review this information and determine if the equipment is still in your possession. If this equipment is no longer in your possession, please forward this notice to the current owner or to your customer, as applicable.

Description:

Onboard Systems has received reports that some electric swivels fail to turn freely under load. It has been determined that two issues may lead to binding of the swivel:

1. **Missing chamfer on swivel body P/N 291-538-00.** A missing chamfer on some build lots of 291-538-00 can offset the sealing bolt and cause ball bearings to not rotate freely in their races.
2. **Lack of break-in procedure.** A break-in procedure is necessary for optimal performance of the swivel. Without this procedure, the swivel may not be able to turn freely under load, depending on how it is initially used.

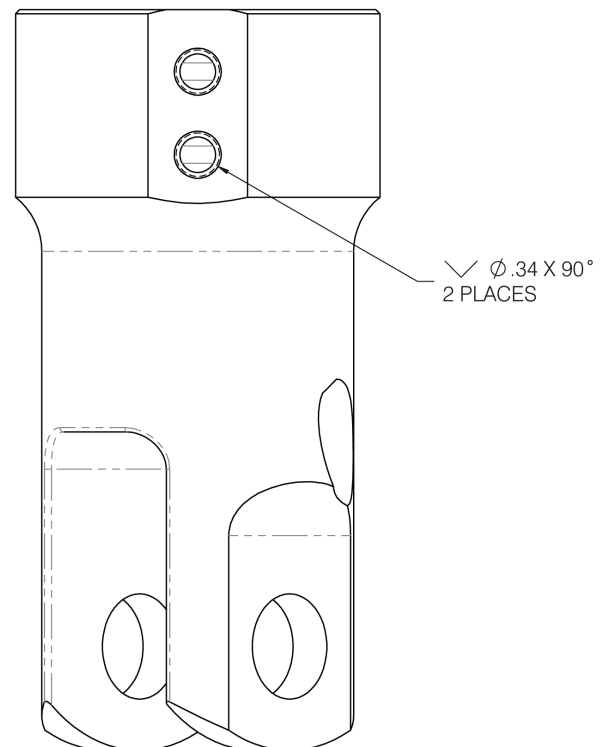
Action:

- ◆ If you possess an electric swivel P/N 232-457-00, S/N 119 or subsequent, OR have not experienced issues with your swivel, no action is required.
- ◆ If you have had performance issues with your swivel, it is suggested to return the swivel to the factory for rework. Contact Onboard Systems to obtain an RMA number:
 - Send an email request to: techhelp@onboardsystems.com
 - Send a fax request to: +1.360.546.3073
 - Send a request via the form on our website: <http://www.onboardsystems.com/rma.php>

Onboard Systems will perform the necessary rework to the electric swivel with the following actions:

- ◆ Disassemble the swivel per instructions in Owner's manual 120-205-00, Section 3.
- ◆ Inspect P/N 291-538-00 for required chamfers. If chambers are not present, create chamfers per the illustration in Figure 1.
- ◆ Reassemble the swivel per instructions in 120-205-00, Section 3 and internal planning guidelines for 232-547-00.
- ◆ Perform the break-in procedure by completing Acceptance Test Procedure 180-212-00, revision 2 or later. The torque required to rotate the swivel must be less than 3.5 feet-LB at 3,000 LB and 5 feet-LB at 6,000 LB.

Figure 1: Swivel chamfers



Onboard Systems is dedicated to supporting helicopter external load operators. We welcome any feedback or comments you may have. If you have any questions or require additional information, please contact us.